

NORTH DAKOTA

CONTACT THE STAFF

COORDINATOR:

Jenny Galbraith
Email: jgalbraith@nd.gov
Phone: 701-328-2335
Fax: 701-328-0355

ADDRESS:

North Dakota Department of Health
2635 East Main Avenue
P.O. Box Box 5520
Bismarck, ND 58505

HEPATITIS COORDINATOR:

Sarah Weninger
Email: sweninger@nd.us
Phone: 701-328-2366

SCREENING REQUIREMENTS

Does the jurisdiction require screening of pregnant women for hepatitis B infection or hepatitis B surface antigen (HBsAg)?

No

Does the jurisdiction specifically require reporting of positive HBsAg status in pregnant women?

No

COMPLETION OF HEPATITIS B VACCINATION SERIES

3 or more doses among children 19-35 months of age

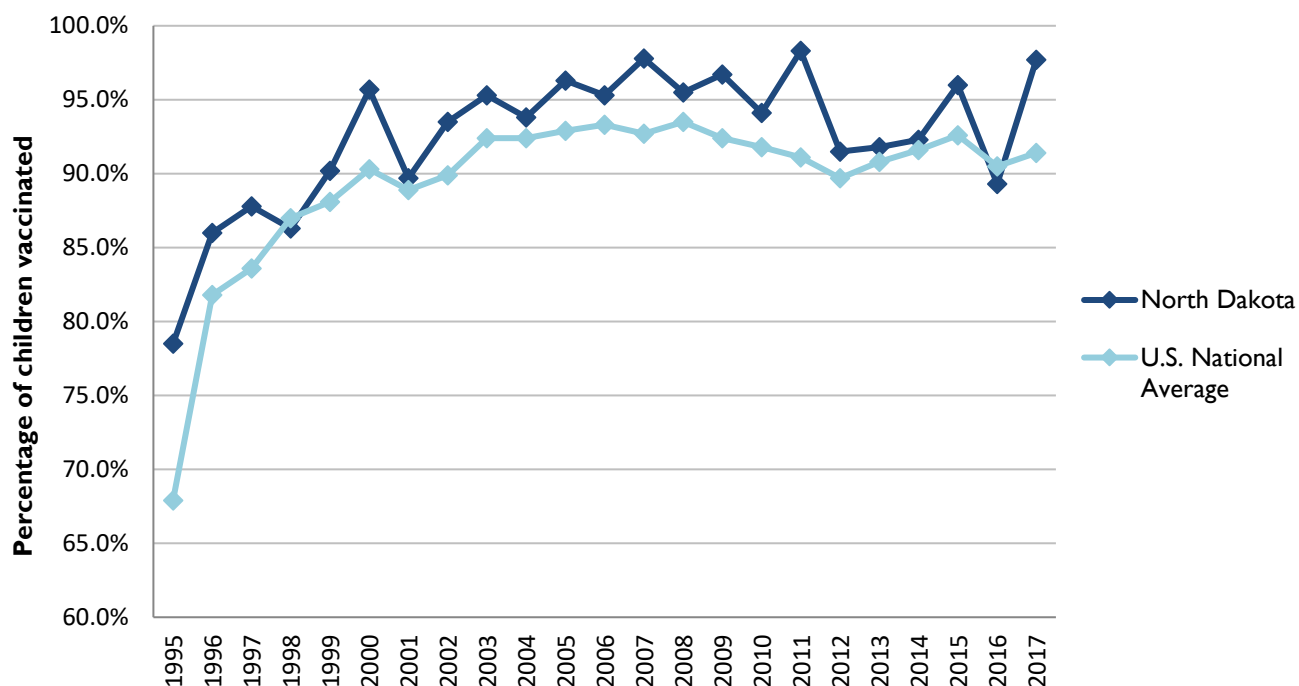
	Percentage of children 19-35 months of age receiving 3 or more doses	Rank among other states	U.S. National Average	#1 ranked state and coverage
1995	78.5 ± 6.0%	5	67.9 ± 1.3%	88.5 ± 5.4% (South Carolina)
1996	86.0 ± 4.4%	12	81.8 ± 0.9%	95.8 ± 2.2% (South Carolina)
1997	87.8 ± 4.0%	10	83.6 ± 0.8%	91.6 ± 4.2% (New Jersey)
1998	86.3 ± 4.1%	30	87.0 ± 0.7%	94.1 ± 2.7% (South Carolina)
1999	90.2 ± 3.7%	22	88.1 ± 0.7%	94.0 ± 3.1% (Rhode Island)
2000	95.7 ± 2.5%	3	90.3 ± 0.6%	96.4 ± 1.9% (Rhode Island)
2001	89.7 ± 3.7%	21	88.9 ± 0.7%	95.8 ± 2.2% (Rhode Island)
2002	93.5 ± 5.5%	6	89.9 ± 0.7%	97.0 ± 2.0% (Rhode Island)
2003	95.3 ± 3.1%	8	92.4 ± 0.6%	98.2 ± 1.4% (Connecticut)
2004	93.8 ± 3.1%	21	92.4 ± 0.6%	96.8 ± 1.7% (Florida)
2005	96.3 ± 2.6%	4	92.9 ± 0.6%	97.9 ± 2.0% (Massachusetts)
2006	95.3 ± 3.1%	12	93.3 ± 0.6%	97.8 ± 1.6% (Rhode Island)
2007	97.8 ± 1.8%	2	92.7 ± 0.7%	98.6 ± 1.5% (New Hampshire)
2008	95.5 ± 2.5%	9	93.5 ± 0.7%	98.1 ± 1.6% (Connecticut)
2009	96.7 ± 2.6%	4	92.4 ± 0.7%	98.8 ± 1.5% (Rhode Island)
2010	94.1 ± 4.6%	7	91.8 ± 0.7%	98.3 ± 1.5% (North Dakota)
2011	98.3 ± 1.5%	1	91.1 ± 0.7%	97.1 ± 1.7% (Louisiana)
2012	91.5 ± 5.2%	17	89.7 ± 0.9%	96.3 ± 3.0% (Georgia)
2013	91.8 ± 3.7%	22	90.8 ± 1.0%	96.7 ± 2.3% (Rhode Island)
2014	92.3 ± 4.4%	24	91.6 ± 0.9%	97.6 ± 1.8% (Louisiana)
2015	96.0 ± 2.5%	4	92.6 ± 0.7%	97.3 ± 2.3% (Connecticut)
2016	89.3 ± 4.9%	40	90.5 ± 1.1%	97.4 ± 1.9% (Iowa)
2017	97.7 ± 1.6%	1	94.1 ± 0.9%	97.7 ± 1.6% (North Dakota)

Data compiled by the ALC from National Immunization Surveys, 1995-2017¹,

<https://www.cdc.gov/vaccines/imz-managers/coverage/childvaxview/data-reports/hepb/index.html>

GRAPH:

Percentage of Children 19-35 Months of Age Receiving 3 or More Doses of Hepatitis B Vaccine



Data compiled by the ALC from National Immunization Surveys, 1995-2017¹,
<https://www.cdc.gov/vaccines/imz-managers/coverage/childvaxview/data-reports/hepb/index.html>

HEPATITIS B BIRTH DOSE VACCINATION COVERAGE

1 or more dose among infants within 3 days of birth

	Percentage of infants receiving			Rank among other states according to		
	1 dose within 1 day of birth*	1 dose within 2 days of birth	1 dose within 3 days of birth*	1 dose within 1 day of birth	1 dose within 2 days of birth	1 dose within 3 days of birth
2003		74.3 ± 6.1%		N/A	3	N/A
2004		72.0 ± 5.9%		N/A	5	N/A
2005		67.8 ± 6.6%		N/A	8	N/A
2006	51.5 ± 6.3%	72.3 ± 6.1%	76.4 ± 5.9%	22	6	4
2007	53.9 ± 7.0%	71.4 ± 6.3%	75.7 ± 5.9%	22	8	7
2008	49.6 ± 6.6%	66.4 ± 6.2%	72.0 ± 5.9%	28	11	8
2009	58.7 ± 7.2%	75.9 ± 6.2%	78.3 ± 6.0%	20	4	2
2010	61.5 ± 6.5%	76.9 ± 5.8%	79.5 ± 5.6%	19	7	7
2011	62.9 ± 9.1%	75.6 ± 8.4%	83.4 ± 6.6%	24	12	1
2012	59.0 ± 7.3%	77.1 ± 6.2%	82.3 ± 5.6%	35	14	6
2013	61.9 ± 6.8%	79.8 ± 6.0%	82.0 ± 5.9%	31	12	1
2014	59.0 ± 7.3%	77.1 ± 6.2%	82.3 ± 5.6%	35	11	7
2015	68.6 ± 6.8%	84.4 ± 5.2%	87.5 ± 4.7%	19	1	1
2016	71.0 ± 7.2%	81.7 ± 5.9%	83.4 ± 5.7%	11	2	2
2017	76.0 ± 6.6%	82.5 ± 6.1%	84.0 ± 6.0%	5	2	2

*No data available 2003-2005

2017 U.S. NATIONAL AVERAGE

Day 1: 65.7 ± 1.6%
Day 2: 72.0 ± 1.6%
Day 3: 73.6 ± 1.6%

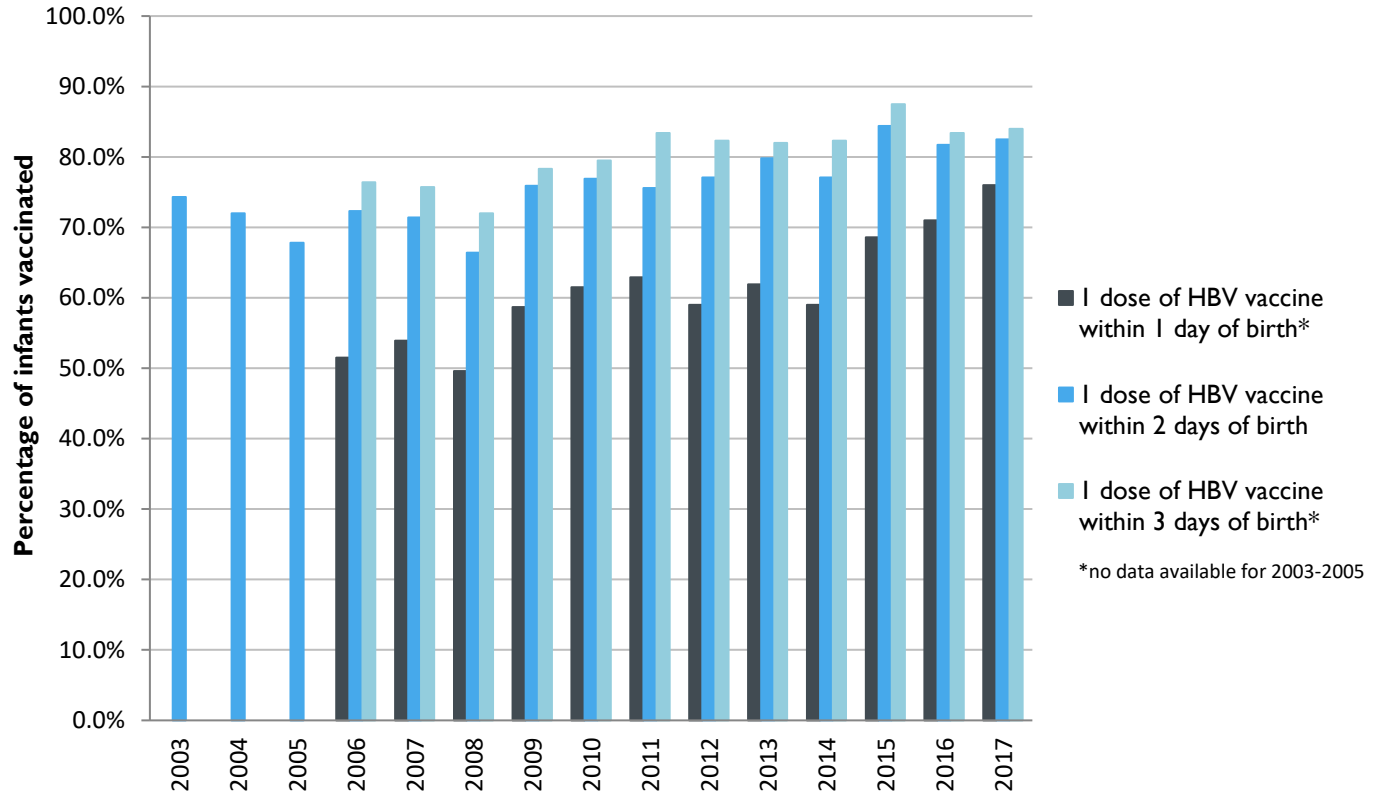
2017 HIGHEST BIRTH DOSE COVERAGE

Day 1: 82.0 ± 5.7% (Kentucky)
Day 2: 84.1 ± 5.6% (Kentucky)
Day 3: 84.1 ± 5.6% (Kentucky)

Data compiled by the ALC from National Immunization Surveys, 1995-2017¹,
<https://www.cdc.gov/vaccines/imz-managers/coverage/childvaxview/data-reports/hepb/index.html>

GRAPH:

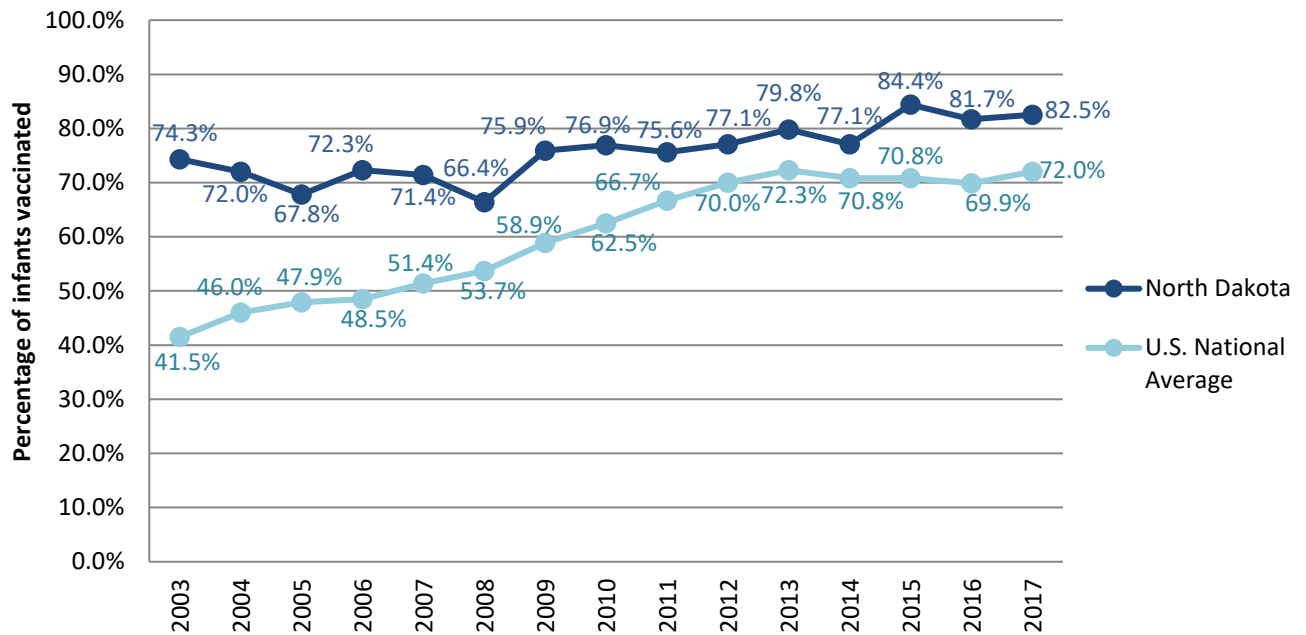
Estimated Vaccination Coverage for Hepatitis B Vaccine among Children from Birth to 3 Days of Age in North Dakota



Data compiled by the ALC from National Immunization Surveys, 1995-2017¹,
<https://www.cdc.gov/vaccines/imz-managers/coverage/childvaxview/data-reports/hepb/index.html>

GRAPH:

Percentage of Infants Receiving 1 Dose of Hepatitis B Vaccine within 2 Days of Birth



Data compiled by the ALC from National Immunization Surveys, 1995-2017¹,
<https://www.cdc.gov/vaccines/imz-managers/coverage/childvaxview/data-reports/hepb/index.html>

¹ The data from the National Immunization Surveys constitute a composite of data from children who were 19-35 months of age at the time of the survey. Therefore, the data might reflect a different estimate from the states' own birth cohort data.