

# MAINE

## CONTACT THE STAFF

### COORDINATOR:

Jessica Shiminski  
Email: Jessica.Shiminski@maine.gov  
Phone: 207-287-3862  
Fax: 207-287-8127

### ADDRESS:

Division of Infectious Disease  
Maine Center for Disease Control and  
Prevention  
286 Water Street, 9th Floor Key Plaza  
Augusta, ME 04333

## SCREENING REQUIREMENTS

Does the jurisdiction require screening of pregnant women for hepatitis B infection or hepatitis B surface antigen (HBsAg)?

No

Does the jurisdiction specifically require reporting of positive HBsAg status in pregnant women?

No

## COMPLETION OF HEPATITIS B VACCINATION SERIES

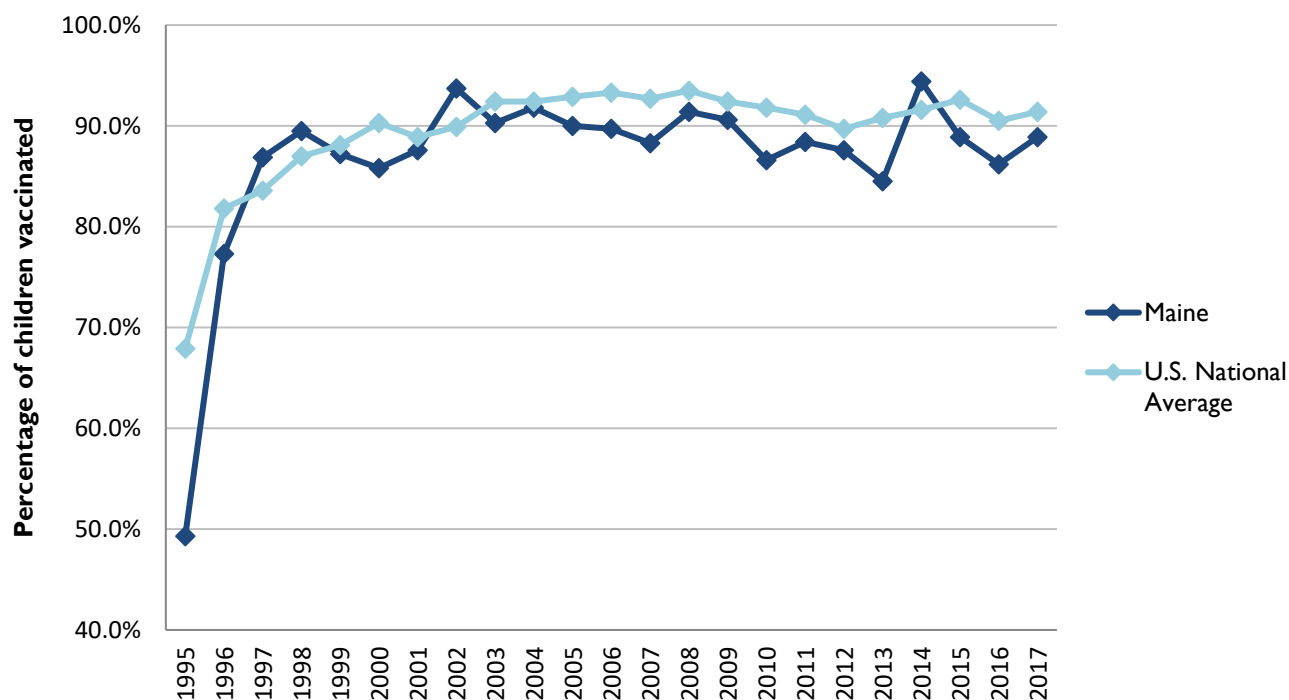
3 or more doses among children 19-35 months of age

	Percentage of children 19-35 months of age receiving 3 or more doses	Rank among other states	U.S. National Average	#1 ranked state and coverage
1995	49.3 ± 6.9%	45	67.9 ± 1.3%	88.5 ± 5.4% (South Carolina)
1996	77.3 ± 4.9%	40	81.8 ± 0.9%	95.8 ± 2.2% (South Carolina)
1997	86.9 ± 4.0%	15	83.6 ± 0.8%	91.6 ± 4.2% (New Jersey)
1998	89.5 ± 3.7%	12	87.0 ± 0.7%	94.1 ± 2.7% (South Carolina)
1999	87.2 ± 4.0%	36	88.1 ± 0.7%	94.0 ± 3.1% (Rhode Island)
2000	85.8 ± 4.2%	46	90.3 ± 0.6%	96.4 ± 1.9% (Rhode Island)
2001	87.6 ± 3.9%	31	88.9 ± 0.7%	95.8 ± 2.2% (Rhode Island)
2002	93.7 ± 2.9%	5	89.9 ± 0.7%	97.0 ± 2.0% (Rhode Island)
2003	90.3 ± 3.8%	38	92.4 ± 0.6%	98.2 ± 1.4% (Connecticut)
2004	91.8 ± 3.6%	33	92.4 ± 0.6%	96.8 ± 1.7% (Florida)
2005	90.0 ± 5.0%	42	92.9 ± 0.6%	97.9 ± 2.0% (Massachusetts)
2006	89.7 ± 5.0%	46	93.3 ± 0.6%	97.8 ± 1.6% (Rhode Island)
2007	88.3 ± 5.1%	48	92.7 ± 0.7%	98.6 ± 1.5% (New Hampshire)
2008	91.4 ± 3.6%	42	93.5 ± 0.7%	98.1 ± 1.6% (Connecticut)
2009	90.6 ± 3.9%	35	92.4 ± 0.7%	98.8 ± 1.5% (Rhode Island)
2010	86.6 ± 5.4%	50	91.8 ± 0.7%	98.3 ± 1.5% (North Dakota)
2011	88.4 ± 4.2%	41	91.1 ± 0.7%	97.1 ± 1.7% (Louisiana)
2012	87.6 ± 4.7%	44	89.7 ± 0.9%	96.3 ± 3.0% (Georgia)
2013	84.5 ± 5.6%	49	90.8 ± 1.0%	96.7 ± 2.3% (Rhode Island)
2014	94.4 ± 3.2%	15	91.6 ± 0.9%	97.6 ± 1.8% (Louisiana)
2015	88.9 ± 5.4%	49	92.6 ± 0.7%	97.3 ± 2.3% (Connecticut)
2016	86.2 ± 4.5%	47	90.5 ± 1.1%	97.4 ± 1.9% (Iowa)
2017	88.9 ± 4.0%	47	91.4 ± 0.9%	97.7 ± 1.6% (North Dakota)

Data compiled by the ALC from National Immunization Surveys, 1995-2017<sup>1</sup>,  
<https://www.cdc.gov/vaccines/imz-managers/coverage/childvaxview/data-reports/hepb/index.html>

## GRAPH:

### Percentage of Children 19-35 Months of Age Receiving 3 or More Doses of Hepatitis B Vaccine



Data compiled by the ALC from National Immunization Surveys, 1995-2017<sup>1</sup>,  
<https://www.cdc.gov/vaccines/imz-managers/coverage/childvaxview/data-reports/hepb/index.html>

## HEPATITIS B BIRTH DOSE VACCINATION COVERAGE

### 1 or more dose among infants within 3 days of birth

	Percentage of infants receiving			Rank among other states according to		
	1 dose within 1 day of birth*	1 dose within 2 days of birth	1 dose within 3 days of birth*	1 dose within 1 day of birth	1 dose within 2 days of birth	1 dose within 3 days of birth
2003		22.1 ± 5.7%		N/A	45	N/A
2004		37.9 ± 6.6%		N/A	39	N/A
2005		43.7 ± 7.8%		N/A	34	N/A
2006	34.4 ± 7.8%	59.0 ± 7.6%	62.7 ± 7.4%	39	22	18
2007	39.4 ± 7.7%	61.2 ± 7.4%	68.6 ± 6.9%	37	23	15
2008	36.9 ± 6.5%	60.2 ± 6.4%	66.8 ± 6.1%	39	30	17
2009	37.1 ± 6.8%	56.0 ± 6.9%	68.6 ± 6.2%	45	36	17
2010	42.3 ± 6.9%	62.7 ± 6.5%	68.8 ± 6.2%	47	40	36
2011	42.0 ± 7.7%	64.3 ± 7.0%	72.0 ± 6.5%	47	28	13
2012	48.5 ± 7.5%	66.7 ± 6.7%	74.2 ± 5.8%	47	39	25
2013	47.6 ± 8.0%	64.2 ± 7.6%	68.9 ± 7.4%	44	42	39
2014	51.3 ± 7.9%	68.4 ± 7.4%	73.0 ± 7.3%	43	38	34
2015	55.6 ± 8.2%	63.7 ± 8.0%	68.7 ± 7.7%	43	46	39
2016	53.1 ± 6.8%	64.0 ± 6.5%	67.8 ± 6.3%	45	44	41
2017	48.4 ± 7.0%	59.6 ± 6.8%	63.1 ± 6.7%	47	48	48

\*No data available 2003-2005

### 2017 U.S. NATIONAL AVERAGE

Day 1: 65.7 ± 1.6%  
Day 2: 72.0 ± 1.6%  
Day 3: 73.6 ± 1.6%

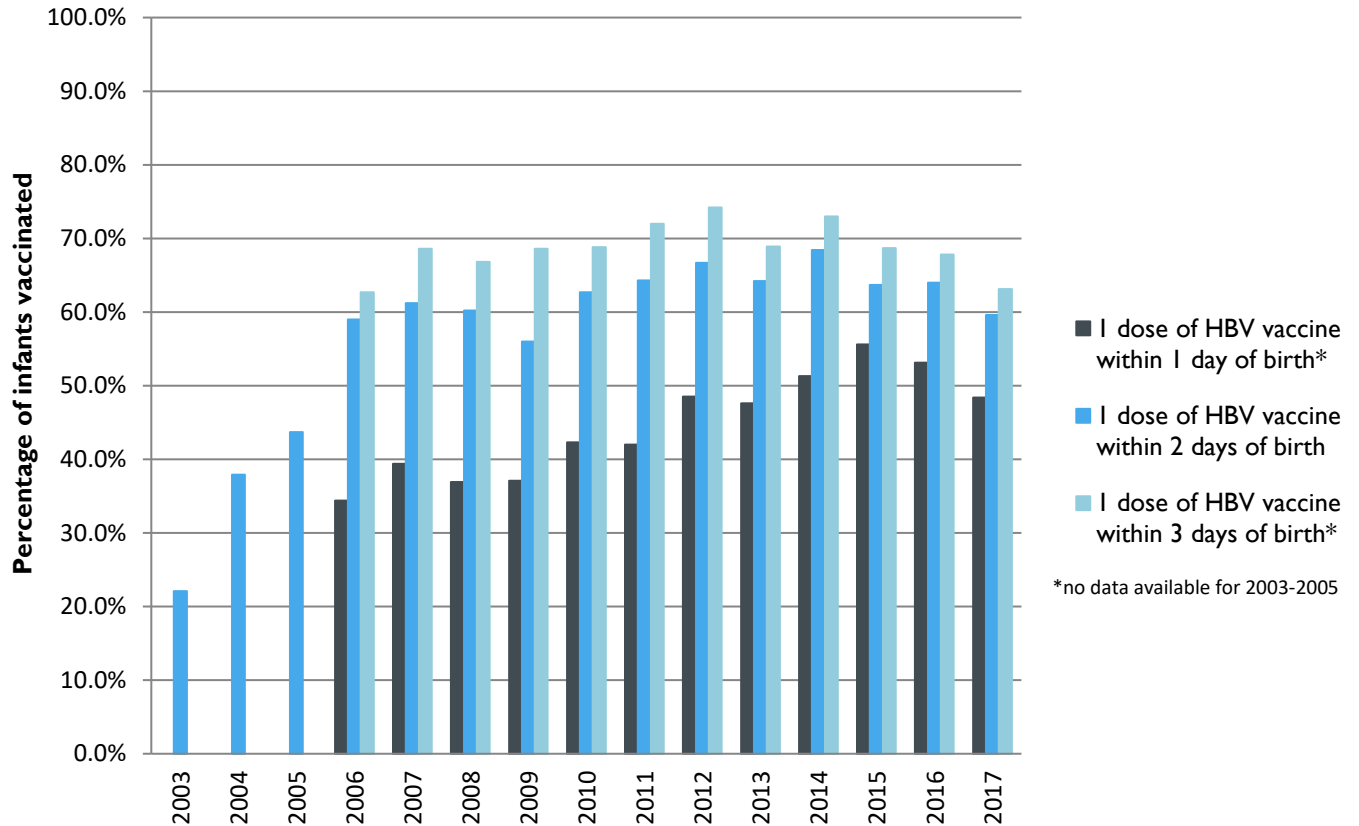
### 2017 HIGHEST BIRTH DOSE COVERAGE

Day 1: 82.0 ± 5.7% (Kentucky)  
Day 2: 84.1 ± 5.6% (Kentucky)  
Day 3: 84.1 ± 5.6% (Kentucky)

Data compiled by the ALC from National Immunization Surveys, 1995-2017<sup>1</sup>,  
<https://www.cdc.gov/vaccines/imz-managers/coverage/childvaxview/data-reports/hepb/index.html>

## GRAPH:

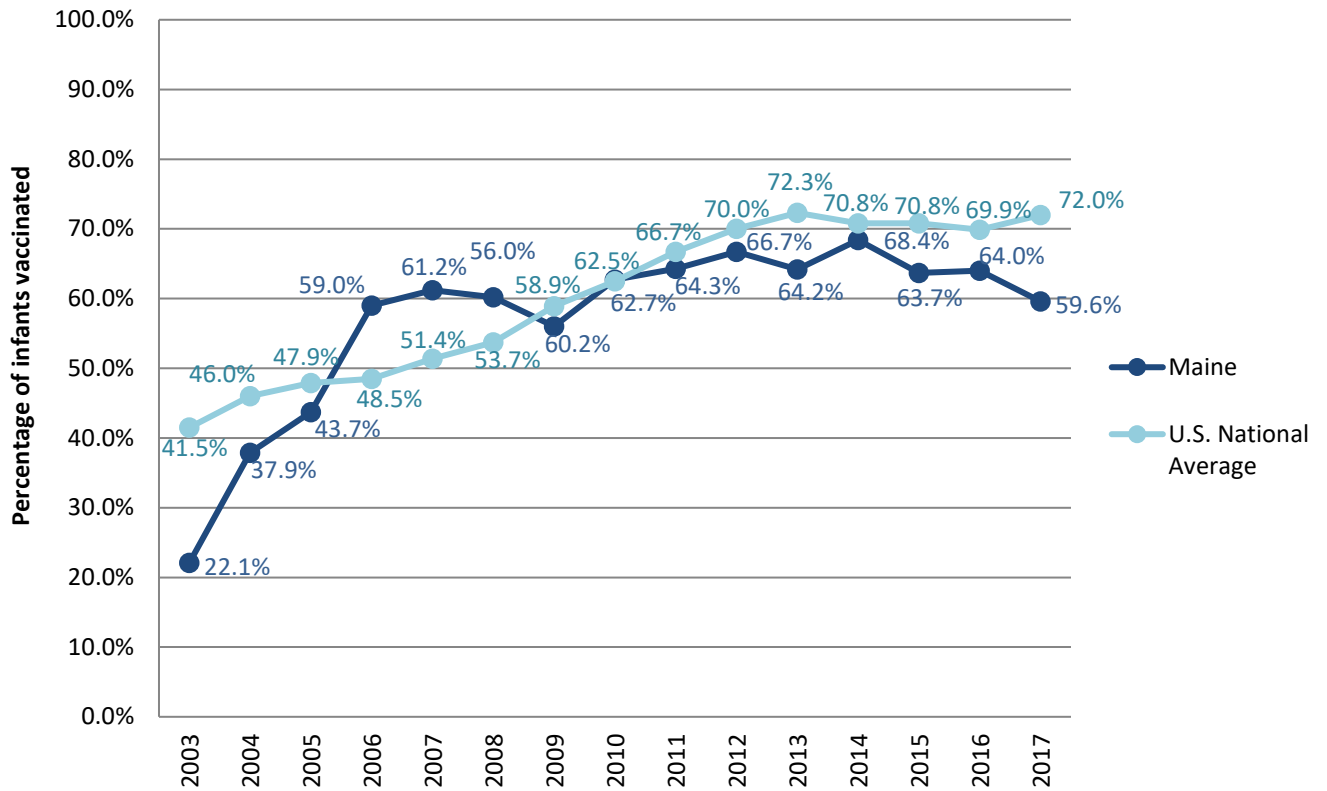
Estimated Vaccination Coverage for Hepatitis B Vaccine among Children from Birth to 3 Days of Age in Maine



Data compiled by the ALC from National Immunization Surveys, 1995-2017<sup>1</sup>,  
<https://www.cdc.gov/vaccines/imz-managers/coverage/childvaxview/data-reports/hepb/index.html>

## GRAPH:

### Percentage of Infants Receiving 1 Dose of Hepatitis B Vaccine within 2 Days of Birth



Data compiled by the ALC from National Immunization Surveys, 1995-2017<sup>1</sup>,  
<https://www.cdc.gov/vaccines/imz-managers/coverage/childvaxview/data-reports/hepb/index.html>

<sup>1</sup> The data from the National Immunization Surveys constitute a composite of data from children who were 19-35 months of age at the time of the survey. Therefore, the data might reflect a different estimate from the states' own birth cohort data.